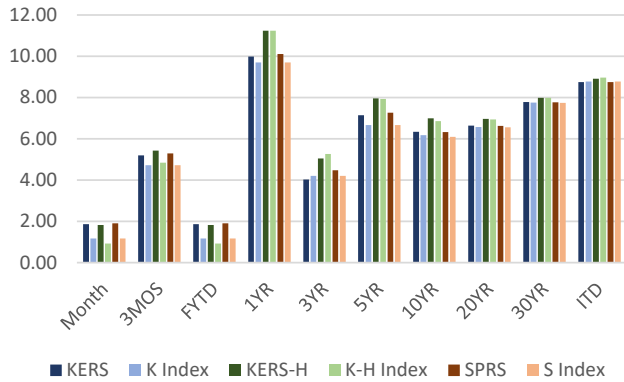


K,KH,S Pension Performance - 07/31/24

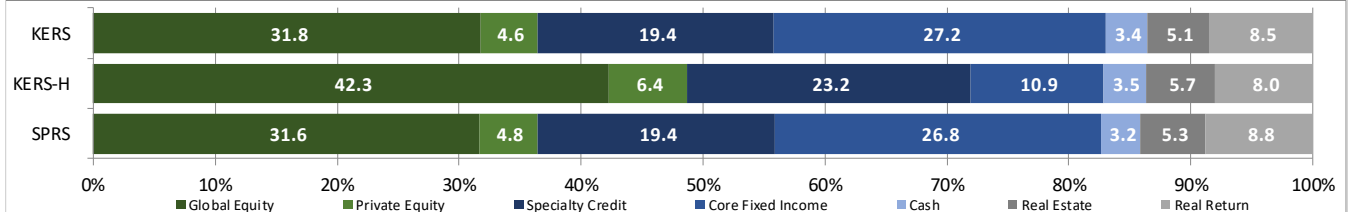


KERS, KERS-HAZ, & SPRS - PENSION FUND - PLAN NET RETURNS - 07/31/24

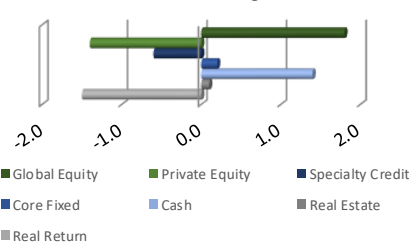
Plan	Market Value	Month	3 Months	Fiscal YTD	1 Year	3 Years	5 Years	10 Years	20 Years	30 Years	ITD
<b>KERS</b>	<b>4,319,819,051.66</b>	<b>1.86</b>	<b>5.20</b>	<b>1.86</b>	<b>9.98</b>	<b>4.03</b>	<b>7.14</b>	<b>6.34</b>	<b>6.64</b>	<b>7.78</b>	<b>8.74</b>
KY Ret. KERS Plan IPS Index		1.17	4.72	1.17	9.70	4.21	6.66	6.17	6.57	7.75	8.78
<b>KERS-H</b>	<b>1,046,157,434.49</b>	<b>1.83</b>	<b>5.43</b>	<b>1.83</b>	<b>11.23</b>	<b>5.05</b>	<b>7.96</b>	<b>6.99</b>	<b>6.96</b>	<b>7.99</b>	<b>8.91</b>
KY Ret. KERS Haz Plan IPS Index		0.92	4.84	0.92	11.23	5.26	7.93	6.85	6.94	7.99	8.97
<b>SPRS</b>	<b>665,642,183.67</b>	<b>1.90</b>	<b>5.29</b>	<b>1.90</b>	<b>10.10</b>	<b>4.48</b>	<b>7.27</b>	<b>6.32</b>	<b>6.62</b>	<b>7.77</b>	<b>8.74</b>
KY Ret. SPRS Plan IPS Index		1.17	4.72	1.17	9.70	4.21	6.66	6.10	6.56	7.74	8.78

KPPA PENSION FUND UNIT - NET RETURNS - 07/31/24 - PROXY PLAN ASSET PERFORMANCE

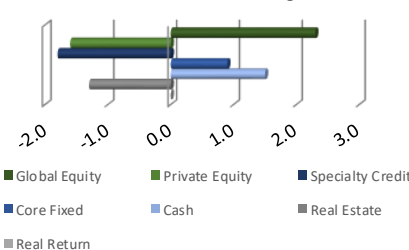
Structure	Month	3 Months	Fiscal YTD	1 Year	3 Years	5 Years	10 Years	20 Years	30 Years	ITD
<b>PUBLIC EQUITY</b>	<b>2.33</b>	<b>7.97</b>	<b>2.33</b>	<b>15.83</b>	<b>4.76</b>	<b>10.56</b>	<b>8.51</b>	<b>7.97</b>	<b>9.11</b>	<b>10.41</b>
MSCI ACWI	1.61	8.09	1.61	17.02	5.40	10.70	8.44	7.89	8.94	10.29
<b>PRIVATE EQUITY</b>	<b>0.32</b>	<b>0.69</b>	<b>0.32</b>	<b>4.06</b>	<b>7.94</b>	<b>11.86</b>	<b>11.54</b>	<b>11.13</b>		<b>11.41</b>
Russell 3000 + 3%(Qtr Lag)	-4.00	5.03	-4.00	25.30	9.36	15.47	14.93	12.55		12.43
<b>SPECIALTY CREDIT</b>	<b>0.77</b>	<b>3.32</b>	<b>0.77</b>	<b>11.91</b>	<b>6.77</b>	<b>6.72</b>				<b>6.60</b>
50% BB US HY / 50% Morningstar LSTA Lev'd Ln	1.31	3.01	1.31	10.79	4.31	4.89				4.85
<b>CORE FIXED INCOME</b>	<b>2.08</b>	<b>4.94</b>	<b>2.08</b>	<b>6.72</b>	<b>0.80</b>	<b>2.23</b>	<b>2.66</b>			<b>2.81</b>
Bloomberg US Aggregate	2.34	5.06	2.34	5.10	-2.63	0.19	1.61			1.82
<b>CASH</b>	<b>0.44</b>	<b>1.32</b>	<b>0.44</b>	<b>5.44</b>	<b>3.11</b>	<b>2.22</b>	<b>1.72</b>	<b>1.91</b>	<b>2.76</b>	<b>3.37</b>
FTSE Treasury Bill-3 Month	0.47	1.39	0.47	5.65	3.33	2.28	1.58	1.55	2.41	3.00
<b>REAL ESTATE</b>	<b>0.78</b>	<b>0.13</b>	<b>0.78</b>	<b>-8.06</b>	<b>3.02</b>	<b>6.40</b>	<b>7.91</b>	<b>7.11</b>	<b>6.08</b>	<b>6.20</b>
NCREIF NFI-ODCE Net 1 Qtr in Arrears Index^	0.00	-2.58	0.00	-12.00	2.47	2.56	5.82	6.00	7.12	5.95
<b>REAL RETURN</b>	<b>2.37</b>	<b>5.74</b>	<b>2.37</b>	<b>13.81</b>	<b>10.63</b>	<b>8.76</b>	<b>5.49</b>			<b>5.68</b>
US CPI +3%	0.28	1.31	0.28	5.97	7.30	6.79	4.17			4.29



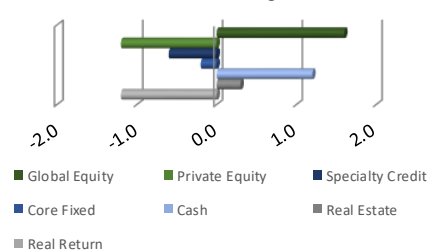
KERS PEN Relative Weights



KERS-HAZ PEN Relative Weights



SPRS PEN Relative Weights

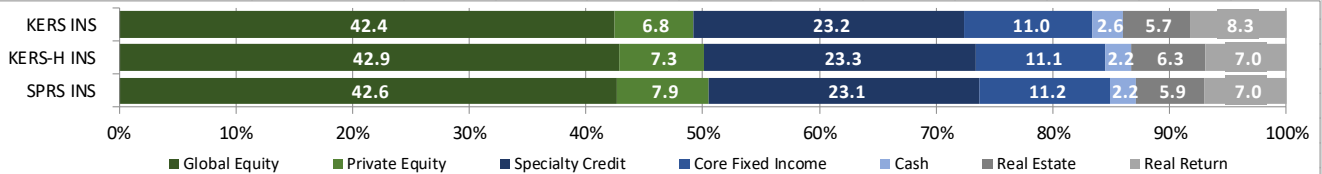


KERS INS, KERS-HAZ INS, SPRS INS - INSURANCE FUND - PLAN NET RETURNS - 07/31/24

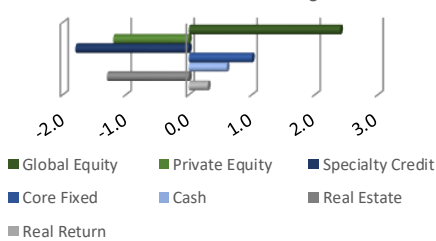
Plan	Market Value	Month	3 Months	Fiscal YTD	1 Year	3 Years	5 Years	10 Years	20 Years	30 Years	ITD
<b>KERS INS</b>	<b>1,711,796,996.37</b>	<b>1.82</b>	<b>5.52</b>	<b>1.82</b>	<b>11.10</b>	<b>5.08</b>	<b>8.00</b>	<b>6.82</b>	<b>6.65</b>	<b>7.09</b>	<b>7.40</b>
KY Ins. KERS Plan IPS Index		0.92	4.84	0.92	11.23	5.39	7.85	6.86	6.81	7.44	7.71
<b>KERS - H INS</b>	<b>676,772,132.45</b>	<b>1.62</b>	<b>5.08</b>	<b>1.62</b>	<b>11.07</b>	<b>5.44</b>	<b>8.02</b>	<b>7.06</b>	<b>6.80</b>	<b>7.19</b>	<b>7.48</b>
KY Ins. KERS Haz Plan IPS Index		0.92	4.84	0.92	11.23	5.39	7.75	6.85	6.81	7.44	7.71
<b>SPRS INS</b>	<b>275,254,132.15</b>	<b>1.63</b>	<b>5.06</b>	<b>1.63</b>	<b>10.93</b>	<b>5.48</b>	<b>8.20</b>	<b>7.24</b>	<b>6.88</b>	<b>7.25</b>	<b>7.53</b>
KY Ins. SPRS Plan IPS Index		0.92	4.84	0.92	11.23	5.39	7.75	6.87	6.82	7.45	7.72

KPPA INSURANCE FUND UNIT - NET RETURNS - 07/31/24 - PROXY PLAN ASSET PERFORMANCE

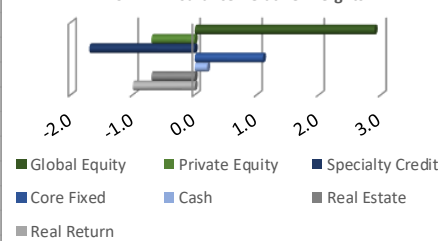
Structure	Month	3 Months	Fiscal YTD	1 Year	3 Years	5 Years	10 Years	20 Years	30 Years	ITD
<b>PUBLIC EQUITY</b>	<b>2.32</b>	<b>7.91</b>	<b>2.32</b>	<b>15.70</b>	<b>4.72</b>	<b>10.52</b>	<b>8.58</b>	<b>7.84</b>		<b>8.87</b>
MSCI ACWI	1.61	8.09	1.61	17.02	5.39	10.68	8.45	7.70		8.73
<b>PRIVATE EQUITY</b>	<b>0.17</b>	<b>1.24</b>	<b>0.17</b>	<b>6.75</b>	<b>12.36</b>	<b>12.12</b>	<b>12.90</b>	<b>11.12</b>		<b>10.73</b>
Russell 3000 + 3%(Qtr Lag)	-4.00	5.03	-4.00	25.30	9.36	15.47	14.93	12.28		12.00
<b>SPECIALTY CREDIT</b>	<b>0.78</b>	<b>3.31</b>	<b>0.78</b>	<b>12.10</b>	<b>6.99</b>	<b>6.74</b>				<b>6.52</b>
50% BB US HY / 50% Morningstar LSTA Lev'd Ln	1.31	3.01	1.31	10.79	4.31	4.89				4.85
<b>CORE FIXED INCOME</b>	<b>2.07</b>	<b>4.93</b>	<b>2.07</b>	<b>6.59</b>	<b>0.60</b>	<b>2.04</b>	<b>2.38</b>			<b>2.53</b>
Bloomberg US Aggregate	2.34	5.06	2.34	5.10	-2.63	0.19	1.61			1.82
<b>CASH</b>	<b>0.44</b>	<b>1.32</b>	<b>0.44</b>	<b>5.48</b>	<b>3.11</b>	<b>2.12</b>	<b>1.58</b>	<b>1.75</b>		<b>2.55</b>
FTSE Treasury Bill-3 Month	0.47	1.39	0.47	5.65	3.33	2.28	1.58	1.55		2.46
<b>REAL ESTATE</b>	<b>0.69</b>	<b>-0.17</b>	<b>0.69</b>	<b>-8.24</b>	<b>2.82</b>	<b>6.27</b>	<b>7.95</b>			<b>8.20</b>
NCREIF NFI-ODCE Net 1 Qtr in Arrears Index^	0.00	-2.58	0.00	-12.00	2.47	2.56	5.82			4.85
<b>REAL RETURN</b>	<b>2.26</b>	<b>5.22</b>	<b>2.26</b>	<b>12.00</b>	<b>9.17</b>	<b>8.18</b>	<b>5.15</b>			<b>5.30</b>
US CPI +3%	0.28	1.31	0.28	5.97	6.87	6.81	4.23			4.34



KERS Insurance Relative Weights



KERS-HAZ Insurance Relative Weights



SPRS Insurance Relative Weights

